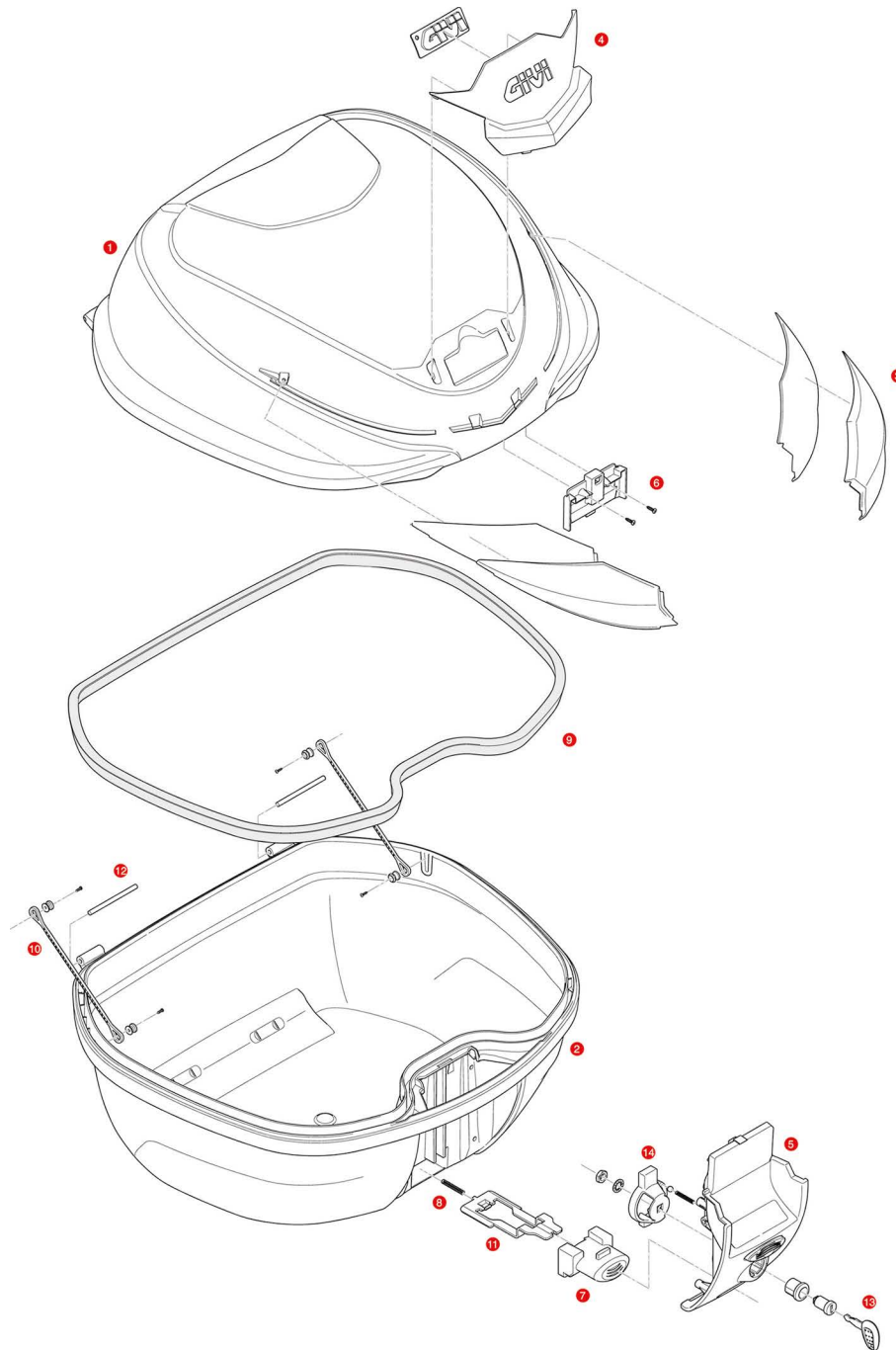


## B360N / B360NT



1	<b>ZB360CNM</b>	B360N assembled Top Shell
	<b>ZB360CNTM</b>	B360NT assembled Top Shell
2	<b>ZB37FNM</b>	B37 Blade / B360 assembled bottom-shell black
	<b>ZB37FNTM</b>	B37 Blade Tech / B360 Tech assembled bottom-shell black
3	<b>Z2514R</b>	Red reflectors
	<b>Z2514FR</b>	Smoked reflectors
4	<b>Z2513R</b>	Central plate
5	<b>Z3007NM</b>	Mounted lock set
	<b>Z3007NTM</b>	Mounted lock set NT
6	<b>Z3012R</b>	Closure system mounted on the lid
7	<b>Z645R</b>	Push button red

	<b>Z645CR</b>	Opening push button chromed
8	<b>Z191R</b>	Push button spring, 1 pcs.
9	<b>Z790R</b>	Trim
10	<b>Z599</b>	Nylon stop bag opening yarn
11	<b>Z761NR</b>	Bolt, 1 pcs.
12	<b>Z590R</b>	Pin. Medium, 2 pcs.
13	<b>Z140R</b>	Key locks with corresponding bush with red handle
	<b>Z661A</b>	Key locks with corresponding bush with silver handle
14	<b>Z3006R</b>	Plate below lock, for standard key
	<b>Z4512R</b>	Plate below lock for Security Lock key
15	<b>SL101</b>	Security lock set including cylinder, 2 keys, bush and under lock platelets