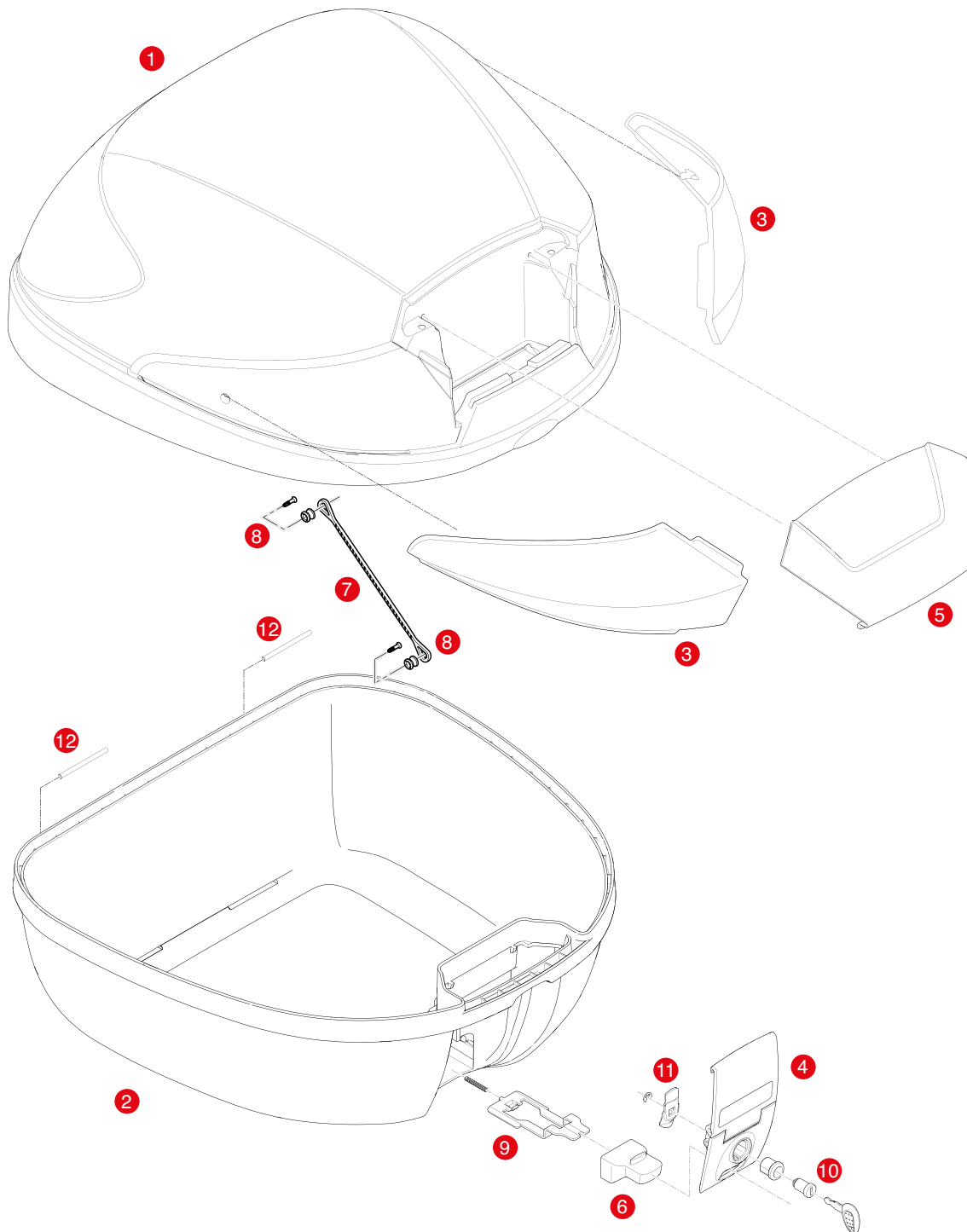


## B29N / B29NT



|   |          |                                |
|---|----------|--------------------------------|
| 1 | Z291CNM  | B29N assembled top-shell black |
|   | Z291CNTM | B29NT assembled top-shell      |
| 2 | Z29FNM   | B29N bottom-shell black        |
|   | Z29FNTM  | B29NT assembled bottom shell   |
| 3 | Z2911R   | Red reflectors (for B29N)      |
|   | Z2911FR  | Smoked reflectors (for B29NT)  |
| 4 | Z314NM   | Hinge black, mounted           |
|   | Z314NTM  | B29NT hinge                    |
| 5 | Z2910R   | B29 central plate              |

|    |        |   |
|----|--------|---|
| 6  | Z315   | Red push button                                     |
|    | Z315NR | Black push button                                   |
| 7  | Z115R  | Stop bag opening yarn, 2 pcs.                       |
| 8  | Z112R  | Red pulley, 4 pcs.                                  |
| 9  | Z310   | Bolt  |
| 10 | Z140R  | Key locks with corresponding bush with red handle   |
|    | Z140NR | Key locks with corresponding bush with black handle |
| 11 | Z243   | Key lock plate                                      |
| 12 | Z193   | Hinge pin 62 mm                                     |