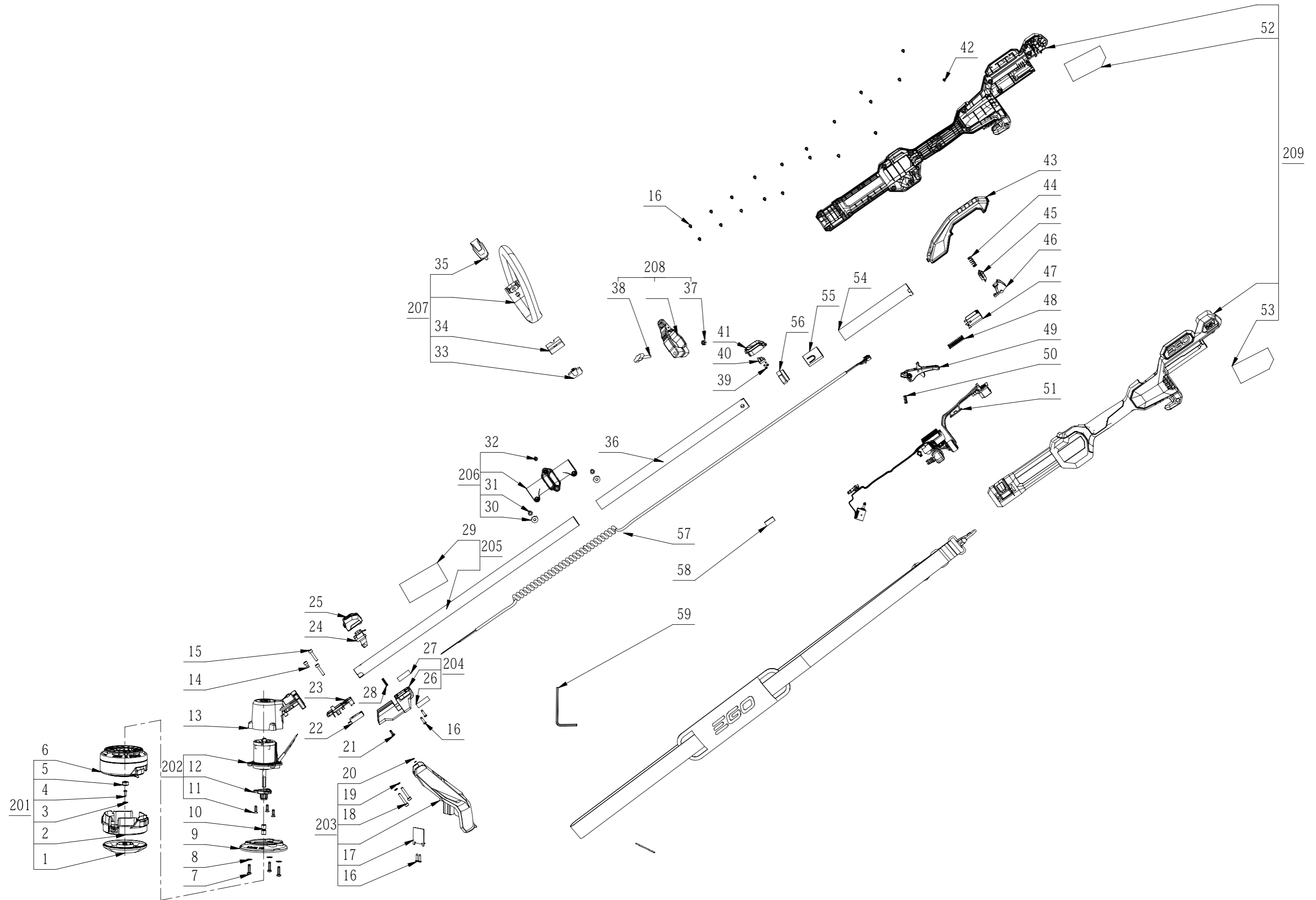




Product Description: Grass Trimmer Body  
Model Number: ST1610E-T  
Service Item Number: 0760113003S01  
Version: A  
Issue Date: 2022/12/09





Repair Parts\_String Trimmer\_4826(ST1610E-T)

Index No.	Art. No.	Description	QTY in machine	Weight (g)	Size LxWxH (mm)	MPQ	Repairable or Not?	Standard Repair Time (min.)
1	3132400001	Support Head	1	11	104x104x18.7	1	Y	2
2	2828673001	Lower Housing Assembly	1	45	47x109x106	1	Y	2
3	5650278001	Washer	1	1	4.3x12x1	10	Y	2
4	5610093003	Tapping Screw	1	2	4x4x12	10	Y	2
5	5630271001	Nut	1	2	8x8x6	10	Y	2
6	2828651001	Upper Housing Assembly	1	89	64x111x111	1	Y	3
7	5610059008	Thread Forming Screw	3	2	5x5x20	10	Y	2
8	5650497001	Plain Washer	3	1	5x13x0.5	10	Y	2
9	3323161001	Fan Guard	1	35	16x113x113	1	Y	5
10	3552901001	Position Sleeve	2	2	8x10x10	1	N	5
11	5610087002	Thread Forming Screw	3	1	5x5x16	10	Y	5
12	3129220001	Bearing Support	1	2	10.6x38.2x22	1	Y	15
13	3421625001	Motor Housing	1	35	89x135x50	1	Y	15
14	5620213003	Hexagon Socket Screw	1	2	5x5x10	10	Y	2
15	5620216003	Hexagon Socket Screw	2	2	5x5x25	10	Y	2
16	5610294001	Tapping Screw	23	2	4x4x16	10	Y	2
17	3705934001	Blade	1	6	41x36.8x13.2	1	Y	2
18	5620646001	Hexagon Socket Screw	2	2	5x5x30	10	Y	2
19	5650015012	Spring Washer	2	1	5x5x0.5	10	Y	2
20	5690203001	O Ring	2	1	3.5x3.5x1	10	Y	2
21	5610237001	Tapping Screw	1	2	4x4x12	10	Y	2
22	4870728002	Micro Switch	1	20	33.15x10x16	10	Y	10
23	3129169002	Switch Support	1	12	8x18x42	1	Y	5
24	3132757001	Switch Lever	1	11	40x34x45	1	Y	3
25	3323135001	Top Switch Box Cover	1	26	44x48x27	1	Y	3
26	2244122002	Nameplate	1	1	0.175x26.3x12.6	50	Y	1
27	2244122001	Nameplate	1	1	0.175x26.3x12.6	50	Y	1
28	3660124001	Spring	1	1	4x4x21	10	Y	2
29	2243949016	Label	1	1	0.175x175x40	50	Y	1
30	3705464001	Limit Chute	2	2	6.4x15.4x2.5	1	Y	2
31	5620334004	Hexagon Socket Screw	2	2	6x6x20	10	Y	2
32	5620434003	Hexagon Socket Screw	1	2	5x5x20	10	Y	2
33	3400010003	Wing Nut	1	8	17x14x22	10	Y	2
34	3127651001	Clamping Block	1	4	12x16x33	1	Y	2
35	2824142001	Handle Lever Set	1	11	7x18x57	1	Y	3
36	3708690001	Rear Connecting Tube	1	40	1.2x25x435	10	Y	5
37	5630009008	Hexagon Nut	1	2	6x6x10	10	Y	2
38	5640239001	Wing Bolt	1	1	12x13x65	10	Y	2
39	5610251001	Thread Forming Screw	2	2	3x3x8	10	Y	2
40	3132698001	Light Guide Pole	1	6	15x17x12	10	Y	2
41	3323122001	Lamp Housing	1	11	19x41x52	1	Y	2
42	5610274001	Self Tapping Screw	1	2	2.9x2.9x16	10	Y	2
43	3660013003	Spring1	1	2	0.7x7x15	10	Y	5
44	3127497001	Power Pack Button	1	6	8x15x26	1	Y	5
45	3323145001	Cover Plate	1	26	45x96x228	1	Y	3
46	3127498001	Power Pack Button	1	8	15x21x46	1	Y	5
47	3131427001	Sliding Block	1	9	15x25x36	1	Y	5
48	3660818001	Compression Spring	1	2	0.5x11.2x42	10	Y	5
49	2828581001	Trigger Assembly	1	28	12x25x36	1	Y	5
50	3660088003	Knob-reset Spring	1	2	0.5x6x11	10	Y	5
51	2831333001	4826 EU Electric Assembly	1	89	59x35x100	1	Y	15
52	2245552004	NamePlate	1	1	0.175x66x27.4	50	Y	1
53	2245552001	NamePlate	1	1	0.175x66x27.4	50	Y	1
54	3708689001	Chute Deflector	1	19	1.2x25x225	10	Y	5
55	3580111001	Inner Pipe Bush	1	15	1.2x27x115	1	Y	5
56	3580317001	Outer Tube Bush	1	6	1.2x26x32	1	Y	5
57	4860824002	Spring Wire	1	59	2.9x1498x3.6	10	Y	20
58	3132755001	Rubber Block	1	2	6x10x26	10	Y	5
59	5680164001	Inner Hexagon Spanner	1	15	5x12x120	1	Y	1
201	AH1620	Cutting Head Set	1	226	115x115x76	1	N	15
202	2730267002	DC Motor	1	120	50x42.5x117	1	Y	18
203	2828583002	Protective Cover Assembly	1	196	65x125x293	1	Y	5
204	2829668001	Switch Box Assembly	1	15	108.6x46.6x48	1	Y	3
205	2829667001	Connecting Tube Assembly	1	56	1.5x25x640	10	Y	15
206	2825434002	Connector ASSY	1	78	28x28x59	1	Y	15
207	2824020003	Handle ASSY	1	165	26x226x369	1	Y	4
208	2828674002	Pothook Assembly	1	26	12x26x45	1	Y	3
209	2828650002	Handle Assembly	1	286	144x690x121	1	Y	20