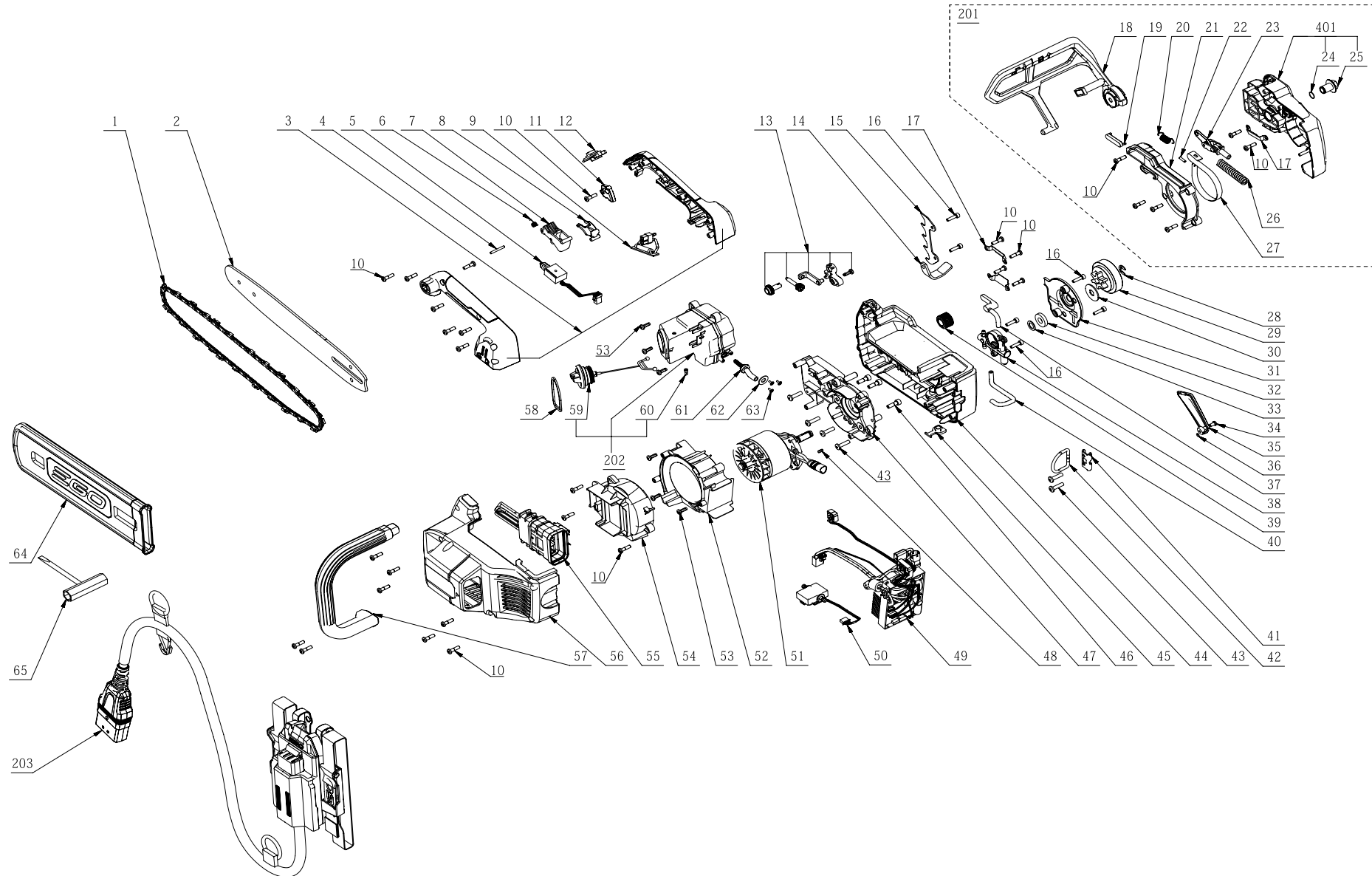




Product Description: Top Handle Saw
Model Number: CSX3000
Body Number: 0640008001_S
Version: A
Issue Date: 2020/09/20





Repair Parts_Top Handle Saw_4559(CSX3000)

Index No.	Art. No.	Description	QTY in machine	Weight (g)	Size LxWxH (mm)	MPQ	Repairable or Not?	Standard Repair Time (min.)
1	3810729001	Chain	1	115	120x130x15	#N/A	N	/
2	3706953004	Guide	1	329	352x51x3	#N/A	N	/
3	2827689001	Handle Assembly	1	140	208x81x71	1	Y	4
4	5670313002	Pin	1	1.4	3x3x24	10	Y	5
5	4870752001	Switch Assembly	1	10	98x38x30	1	Y	6
6	3660697001	Torsion Spring	1	0.5	20x10x6	10	Y	5
7	2827132002	Switch Lever Assembly	1	25	48x32x17	1	Y	4
8	3422689001	Trigger Lever	1	5.2	33x19x19	10	Y	4
9	2830718001	Fuse Electric Assembly	1	13	50x28x21	1	Y	5
10	5620479001	Screw	29	4	4.2x4.2x16	10	Y	2
11	3521234001	Plunge Frame	1	17	24x24x11	10	Y	4
12	3130880001	Lock Button	1	3.9	44x14x22	10	Y	3
13	2827275002	Tension Nut Assembly	1	34.5	55x30x27	1	Y	3
14	3707341001	Chip Shield	1	6.5	39x22x26	1	Y	3
15	3707012001	Wood Teeth	1	15	93x33x1.5	1	Y	3
16	5620013006	Hexagon Socket Screw	6	2.6	8x8x19	1	Y	3
17	3707340001	Protecting Cover Plate	3	2.2	48.5x12.5x9	10	Y	5
18	2827278002	Pivot Plate Assembly	1	101	192x78x130	1	Y	6
19	3130984001	Sealing Gasket	1	1.2	35x9x8	10	Y	1
20	3660802001	Tension Spring	1	1.1	28x9x9	10	Y	6
21	3130858001	Cover Plate	1	48.5	154x102x26	1	Y	2
22	5670298001	Parallel Pin	1	0.7	3x3x12	10	Y	3
23	2827274001	Crank Assembly	1	33	74x18x12	10	Y	6
24	5660266001	C Ring	1	0.2	11x11x1	10	Y	4
25	5630369001	Flange Nut	1	14.9	23x22x22	10	Y	5
26	3660803001	Compression Spring	1	15	12x12x56	10	Y	6
27	3707342001	Brake Band	1	15.5	69x67x9	1	Y	10
28	5660028001	E Ring	1	0.7	12x12x1	10	Y	4
29	3422529001	Sprocket	1	85	53x53x24	1	Y	4
30	5660208002	Gasket	1	6.3	10x28x1.5	10	Y	4
31	3130860001	Right Cover	1	18	82x78x15	1	Y	5
32	5690474001	Felt Ring	1	0.5	22x22x4	10	Y	6
33	5650526002	Plain Washer	1	1	16x16x1	10	Y	6
34	5620651002	Hexalobular Socket Screw	1	1.2	6x6x9	10	Y	1
35	3130857001	Cover Plate	1	7.7	77x37x8	1	Y	1
36	5690203001	O Ring	1	0.2	5.5x5.5x1	10	Y	1
37	3130983001	Rear Tube	1	2.2	70x18x10	10	Y	7
38	2827231001	Pump Assembly	1	37	61x52x12	1	Y	8
39	3570062001	Worm	1	4	21x21x5	10	Y	8
40	3130982001	Intermediate Tube	1	2.5	7x7x115	10	Y	15
41	3707343001	Fixing Board	1	9	33x17x7	10	Y	6
42	3650257001	Pothook	1	11	40x34x7	10	Y	6
43	5610291003	Tapping Screw	6	3.1	9x9x21	10	Y	12
44	3403164001	Right Housing	1	206	228x149x94	1	Y	30
45	3130979001	Protective Cover	1	1.3	26x17x8	10	Y	1
46	5620019005	Hexagon Socket Screw	3	4.3	9x9x20	10	Y	12
47	2827276002	Support Assembly	1	144	162x89x75	1	Y	40
48	5680216001	Key	1	0.5	3x3x8	10	Y	10
49	2830736002	Control Electric Assembly	1	240	188x140x79	1	Y	20
50	2830698001	Signal Acquisition PCBA	1	14	119x35x16	1	Y	30
51	2730321001	DC Motor	1	820	115x75x75	1	Y	35
52	3130862001	Right Fan Baffle	1	47	142x49x95	1	Y	15
53	5610237001	Tapping Screw	6	1.9	7x7x14	10	Y	12
54	3130861001	Left Fan Cover	1	54	109x95x46	1	Y	8
55	4860525003	Internal Wire ASSY	1	112	148x61x51	1	Y	9
56	3130852001	Left Housing	1	224	228x141x109	1	Y	4
57	3130853001	Front Handle	1	78	142x173x37	1	Y	4
58	3131120001	Rubber Ring	1	1	42x60x2	10	Y	6
59	2827277002	Kettle Cover Assembly	1	15	111x43x37	1	Y	1
60	3128576001	Valve	1	0.1	5.1x5.1x10.3	10	Y	5
61	2827286002	Oil Screen Assembly	1	2.2	59x14x14	10	Y	15
62	5650419002	Plain Washer	1	1.36	16x16x1	10	Y	12
63	5620176002	Screw With Washer	3	3	6x6x7.5	10	Y	12
64	3131184001	Sheath	1	71.7	294x94x20	1	Y	1
65	5680272001	Socket Wrench	1	80.3	109x64x19	1	Y	1
201	2827131002	Brake Assembly	1	424	182x202x197	1	Y	1
202	2827709001	Kettle Assembly	1	83	109x94x77	1	Y	20
203	2827512001	Battery Holster	1	1058	400x300x120	#N/A	N	/