

B38-6A

BS CODE: 300919

VOLTAGE **6V**

CCA **105A**

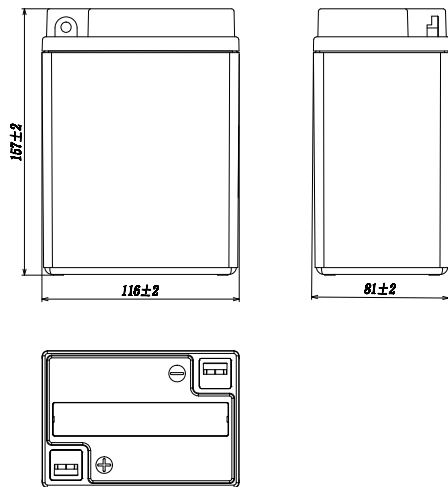
CAPACITY 20HR **13.7Ah**

CAPACITY 10HR **13.0Ah**



DIMENSIONS

LENGTH	119 ±2mm	4.69 ±0.08inch
WIDTH	83 ±2mm	3.27 ±0.08inch
TOTAL HEIGHT	161 ±2mm	6.34 ±0.08inch
WEIGHT	1.8 kg ±5%	3.97 lbs ±5%

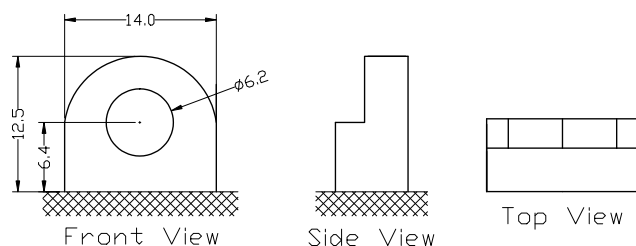


SLA FEATURES

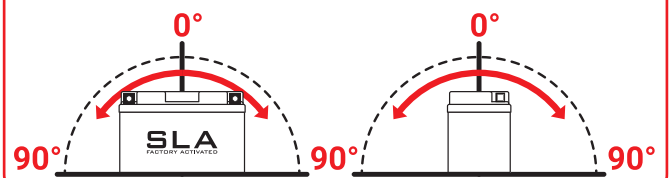
- FACTORY ACTIVATED**
AGM (Absorbent Glass Mat) technology.
- READY TO USE**
Just plug & play.
- NO MAINTENANCE**
VRLA (Valve Regulated Lead Acid) design.
- SPILL-PROOF DESIGN**
Factory sealed & electrolyte held in a glass fiber mat.
- NO ACID HANDLING**
Very safe.
- HIGH STARTING POWER & EXTENDED CYCLE LIFE**

TERMINAL (mm)

POLARITY



MOUNTING ANGLE



UPGRADE FOR

SLA MAX	SLA	MF	DRY
-	-	-	B38-6A