

## BTZ7S

BS CODE: 300635-1

VOLTAGE **12V**

CCA **130A**

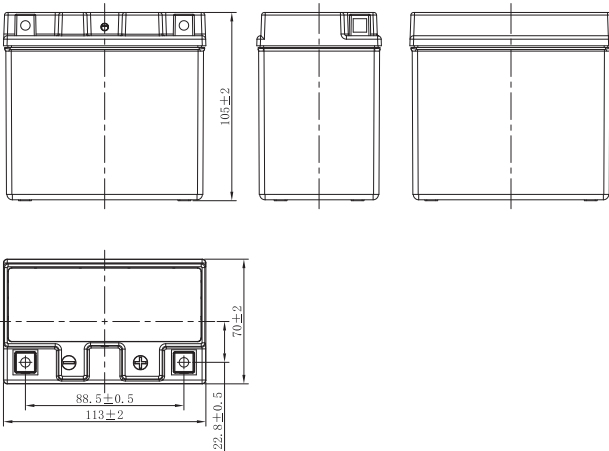
CAPACITY 20HR **6.3Ah**

CAPACITY 10HR **6.0Ah**



### DIMENSIONS

<b>LENGTH</b>	113 ±2mm	4.45 ±0.08inch
<b>WIDTH</b>	70 ±2mm	2.76 ±0.08inch
<b>TOTAL HEIGHT</b>	105 ±2mm	4.13 ±0.08inch
<b>WEIGHT</b>	2.13 kg ±5%	4.7 lbs ±5%

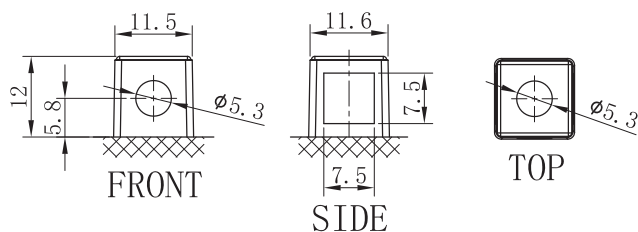


### SLA FEATURES

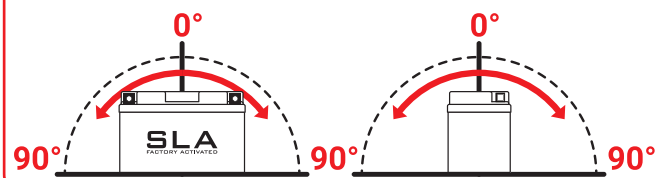
- FACTORY ACTIVATED**  
AGM (Absorbent Glass Mat) technology.
- READY TO USE**  
Just plug & play.
- NO MAINTENANCE**  
VRLA (Valve Regulated Lead Acid) design.
- SPILL-PROOF DESIGN**  
Factory sealed & electrolyte held in a glass fiber mat.
- NO ACID HANDLING**  
Very safe.
- HIGH STARTING POWER & EXTENDED CYCLE LIFE**

### TERMINAL (mm)

**POLARITY**



### MOUNTING ANGLE



### UPGRADE FOR

SLA MAX	SLA	MF	DRY
-	-	BTZ7S-BS	-