

# 51913

BS CODE: **300860**

VOLTAGE **12V**

CCA **275A**

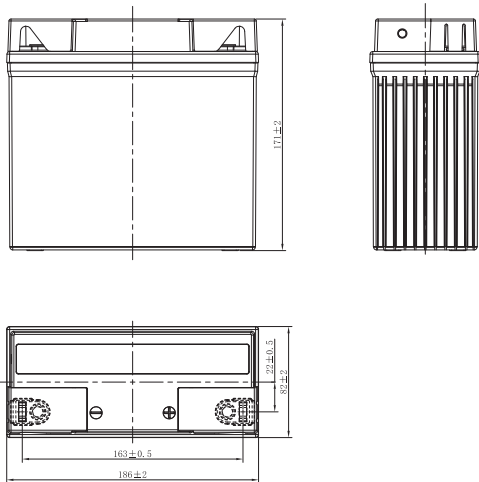
CAPACITY 20HR **22.1Ah**

CAPACITY 10HR **21.0Ah**



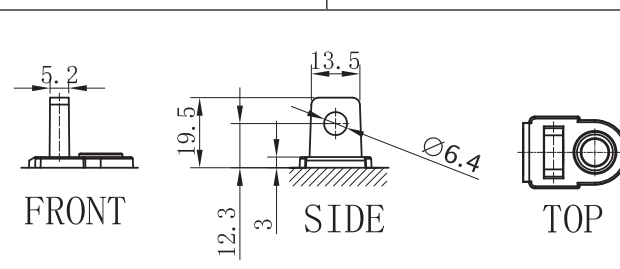
## DIMENSIONS

<b>LENGTH</b>	186 ±2mm	7.32 ±0.08inch
<b>WIDTH</b>	82 ±2mm	3.23 ±0.08inch
<b>TOTAL HEIGHT</b>	171 ±2mm	6.73 ±0.08inch
<b>WEIGHT</b>	5.55 kg ±5%	12.24 lbs ±5%



## TERMINAL (mm)

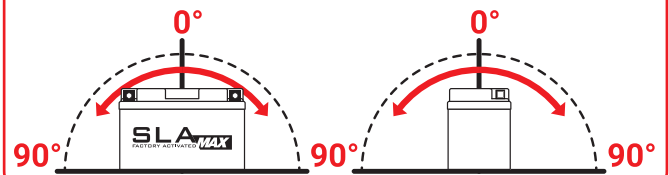
**POLARITY**



## SLA MAX FEATURES

- FACTORY ACTIVATED**  
AGM (Absorbent Glass Mat) technology.
- READY TO USE**  
Just plug & play.
- NO MAINTENANCE**  
VRLA (Valve Regulated Lead Acid) design.
- SPILL-PROOF DESIGN**  
Factory sealed & electrolyte held in a glass fiber mat.
- NO ACID HANDLING**  
Very safe.
- EXTREME VIBRATION RESISTANCE**  
Reinforced battery case.
- MAXIMUM STARTING POWER & EXTENDED CYCLE LIFE**  
20% higher than SLA CCA.
- SUPERIOR CAPACITY**  
20% higher than SLA capacity.

## MOUNTING ANGLE



## UPGRADE FOR

SLA MAX	SLA	MF	DRY
-	-	-	51814 51913