

U1-9

BS CODE: **310691**

VOLTAGE **12V**

CCA **220A**

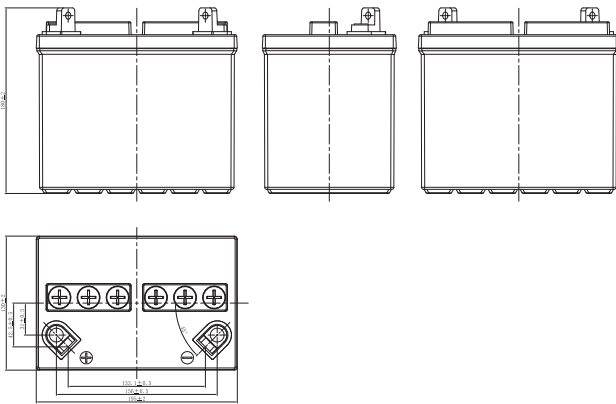
CAPACITY 20HR **25.2Ah**

CAPACITY 10HR **24.0Ah**



DIMENSIONS

LENGTH	195 ±2mm	7.68 ±0.08inch
WIDTH	130 ±2mm	5.12 ±0.08inch
TOTAL HEIGHT	180 ±2mm	7.09 ±0.08inch
WEIGHT	4.7 kg ±5%	10.36 lbs ±5%

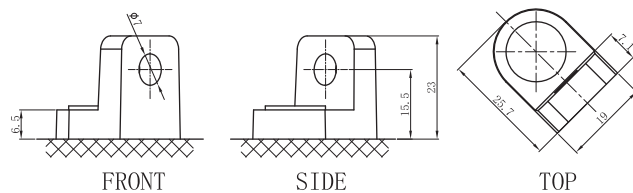


DRY FEATURES

- TO BE ACTIVATED**
DRY-charged technology.
- ACID PACK INCLUDED**
For initial filling.
- PERIODIC MAINTENANCE**
Refilled with water if necessary.
- HANDLE WITH CARE TO PREVENT ACID SPILLAGE**
- LONG SHELF LIFE**
No need to be recharged while stocked (if not activated).
- INTERNAL GAS EMISSION THROUGH VENTING HOLE**
- WIDE VARIETY OF 6V & 12V MODELS**

TERMINAL (mm)

POLARITY



MOUNTING ANGLE



UPGRADE FOR

SLA MAX	SLA	MF	DRY
-	-	-	-