

SLA12-20

BS CODE: **300879**

VOLTAGE **12V**

CCA **180A**

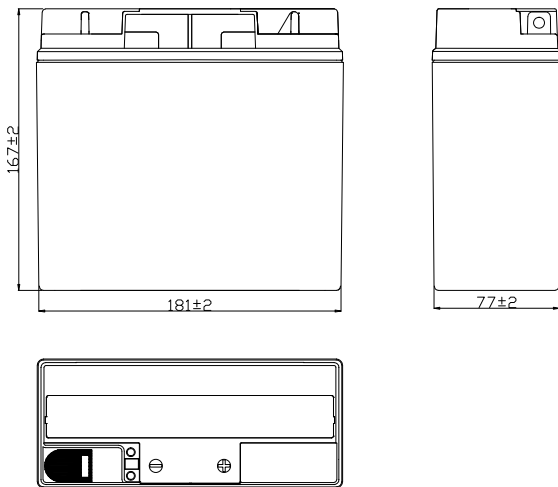
CAPACITY 20HR **22.1Ah**

CAPACITY 10HR **20.0Ah**



DIMENSIONS

LENGTH	181 ±2mm	7.13 ±0.08inch
WIDTH	77 ±2mm	3.03 ±0.08inch
TOTAL HEIGHT	167 ±2mm	6.57 ±0.08inch
WEIGHT	5.3 kg ±5%	11.68 lbs ±5%

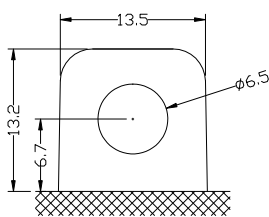


SLA FEATURES

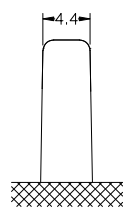
- FACTORY ACTIVATED**
AGM (Absorbent Glass Mat) technology.
- READY TO USE**
Just plug & play.
- NO MAINTENANCE**
VRLA (Valve Regulated Lead Acid) design.
- SPILL-PROOF DESIGN**
Factory sealed & electrolyte held in a glass fiber mat.
- NO ACID HANDLING**
Very safe.
- HIGH STARTING POWER & EXTENDED CYCLE LIFE**

TERMINAL (mm)

POLARITY

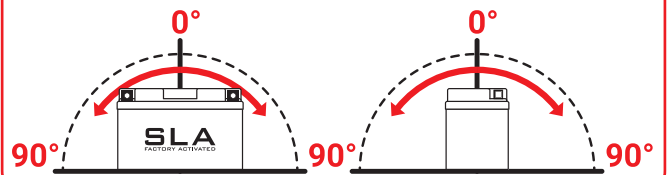


Front View



Side View

MOUNTING ANGLE



UPGRADE FOR

SLA MAX	SLA	MF	DRY
-	-	-	-